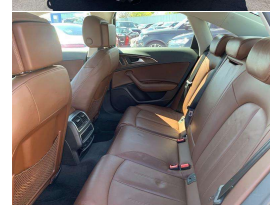
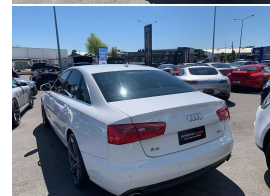
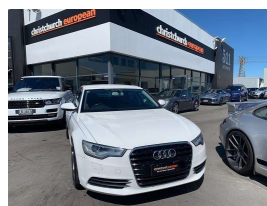


2013 Audi A6 2.0 TFSI SE New Shape Sedan Sports



VEHICLE INFORMATION

Cash Price

Includes GST,
Registration &
Licensing

\$19,995

Finance this vehicle
from only

\$74.96

per week*

Total Amount Payable
\$25,488.16



Body

4 door, Sedan

Odometer

90,000 km

Engine

2000 cc

Fuel Type

Petrol

Transmission

7 Speed Auto

Wheels

19.0000"

VIN

-

Reg No.

PEF464

Ext Colour

White

History

-

Seats

5 seats

Interior

Tan Leather

Audio

-

Stock ID

10944



Gain peace of mind
with Mechanical
Breakdown Insurance.
Ask us how.

2013 Audi A6 2.0 TFSI SE New Shape Sedan, New Generation A6 with improved Electrics, MMI and 7 Speed Automatic, Chain Driven 2.0 TFSI Turbo performance and reliability, Full Leather, Upgraded 19 inch RS Sports Alloys, Keyless Push Button Start, Cruise Control, Bluetooth/CD/AUX, Remote Locking, Climate Air, Multiple Airbags, LED Lighting, Privacy Glass, Parking Sensors and more. Excellent value for a late model Audi!

christchurch european

the european specialists

Phone 03 366 8328, Email sales@christchurcheuropean.co.nz
511 Blenheim Road, Sockburn, Christchurch 8042, New Zealand
www.christchurcheuropean.co.nz

Niki Mills - 021 353 315
Paul Mills - 022 536 0868
Josh Giles - 021 087 54777

* Finance calculation based on a 60 month term, 30% deposit and with an example annual fixed interest rate of 10.95%. Actual interest rate may be higher or lower. Includes an establishment fee of \$500.00 and a monthly maintenance fee of \$10.00. Full term total amount payable of \$25,488.16. Estimate only, not an offer of finance. Terms, conditions and lending criteria apply.