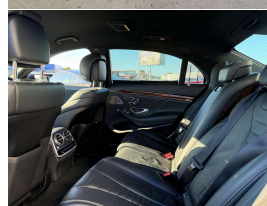
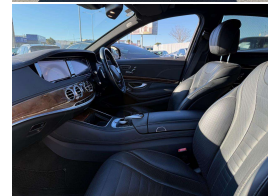
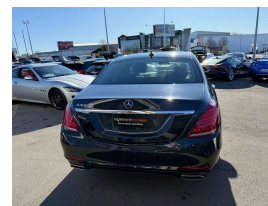


# 2014 Mercedes-Benz S 400 Facelift Long Wheel



## VEHICLE INFORMATION

### Cash Price

Includes GST,  
Registration &  
Licensing

**\$39,995**

Finance this vehicle  
from only

**\$145.12**

per week\*

Total Amount Payable  
\$49,730.86



### Body

4 door, Sedan

### Odometer

78,000 km

### Engine

3000 cc

### Fuel Type

Petrol

### Transmission

Automatic

### Wheels

19.0000"

### VIN

WDD2221652A114763

### Reg No.

-

### Ext Colour

Grey Metallic

### History

-

### Seats

5 seats

### Interior

Black Leather

### Audio

-

### Stock ID

13809



Gain peace of mind  
with Mechanical  
Breakdown Insurance.  
Ask us how.

2014 Mercedes Benz S400 L Long Wheel Base, Facelift Model 3.0 V6 S Class with 7 Speed gearbox, Factory Alloys, LED Lighting, Full Premium Leather, Multi-way Seat adjustments, Luxury Woodgrain, Multiple Airbags, Burmester Premium Surround Audio, Widescreen Digital Dash with NZ Navigation/Bluetooth Phone and Music/Reverse Camera, Electric Rear Blinds, Soft Close Doors, 4-Seat Memory Seats, Climate Air, Full Electrics etc. A well-known world leading model in Safety, Comfort and Luxury. Compare the \$!

**christchurch european**

**the european specialists**

Phone 03 366 8328, Email [sales@christchurcheruropean.co.nz](mailto:sales@christchurcheruropean.co.nz)  
511 Blenheim Road, Sockburn, Christchurch 8042, New Zealand  
[www.christchurcheruropean.co.nz](http://www.christchurcheruropean.co.nz)

Niki Mills - 021 353 315  
Paul Mills - 022 536 0868  
Josh Giles - 021 087 54777

\* Finance calculation based on a 60 month term, 30% deposit and with an example annual fixed interest rate of 10.95%. Actual interest rate may be higher or lower. Includes an establishment fee of \$500.00 and a monthly maintenance fee of \$10.00. Full term total amount payable of \$49,730.86. Estimate only, not an offer of finance. Terms, conditions and lending criteria apply.