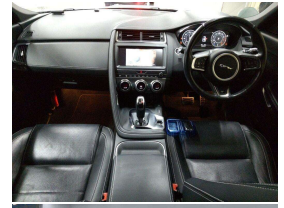
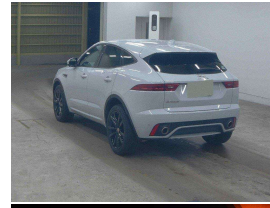


2019 Jaguar E-Pace R-Dynamic HSE P250 Turbo



VEHICLE INFORMATION

Cash Price

Includes GST,
Registration &
Licensing

\$39,995

Finance this vehicle
from only

\$148.42

per week*

Total Amount Payable

\$50,588.65



Gain peace of mind
with Mechanical
Breakdown Insurance.
Ask us how.

Body

5 door, RV/SUV

Odometer

53,000 km

Engine

2000 cc, Internal Combustion

Fuel Type

Petrol

Transmission

8 Speed Automatic, 4WD

Wheels

20.0000"

VIN

SADFA2AX9K1Z67920

Reg No.

-

Ext Colour

Yulong White

History

-

Seats

5 seats, Leather

Interior

Black Leather

Audio

-

Stock ID

14713

2019 Jaguar E-Pace P250 R-Dynamic HSE AWD, Attractive Yulong White Metallic with Black Leather HSE Seats, Low 53,000kms from new!, HSE spec with Heated/Electric/Memory Seats, Radar Adaptive Cruise Control, Heads-up display, 8 Speed Automatic, Push Button Start, Privacy Glass, Lane Keep Assist, 360 Surround Cameras, 20 inch HSE Factory Alloys in Black, Ambient Lighting, LED Lighting, Touch Screen NZ NAV/CD/AUX/Bluetooth Phone and Music Streaming/Car Play, Climate Air, Multiple Airbags, Electric Tailgate and much more!. Very good value for money here for a very popular Jaguar model!

Arriving Soon, Small holding deposit will secure this vehicle pre-arrival.

christchurch european | the european specialists

Phone 03 366 8328, Email sales@christchurcheruropean.co.nz
511 Blenheim Road, Sockburn, Christchurch 8042, New Zealand
www.christchurcheruropean.co.nz

Niki Mills - 021 353 315
Paul Mills - 022 536 0868
Josh Giles - 021 087 54777

* Finance calculation based on a 60 month term, 30% deposit and with an example annual fixed interest rate of 11.95%. Actual interest rate may be higher or lower. Includes an establishment fee of \$500.00 and a monthly maintenance fee of \$10.00. Full term total amount payable of \$50,588.65. Estimate only, not an offer of finance. Terms, conditions and lending criteria apply.