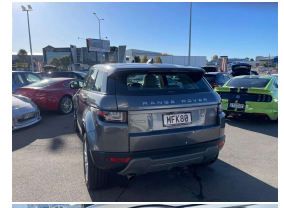


# 2017 Land Rover Range Rover Evoque 2.0 TD4 SE



## VEHICLE INFORMATION

### Cash Price

Includes GST,  
Registration &  
Licensing

**\$32,995**

Finance this vehicle  
from only

**\$123.30**

per week\*

Total Amount Payable

\$41,956.21



Gain peace of mind  
with Mechanical  
Breakdown Insurance.  
Ask us how.

### Body

5 door, RV/SUV

### Odometer

96,000 km

### Engine

2000 cc, TD4

### Fuel Type

Diesel

### Transmission

9 Speed Automatic, 4WD

### Wheels

-

### VIN

-

### Reg No.

MFK80

### Ext Colour

Corris Grey

### History

-

### Seats

5 seats

### Interior

Cream Leather

### Audio

-

### Stock ID

12496

2017 Range Rover Evoque 2.0 TD4 SE 9-Speed, Only 1 NZ Owner imported and sold by ourselves at just 13,000kms in 2018, Latest 2.0 TD4 Ingenium Diesel and 9-Speed Gearbox combination, Full Leather, Heated/Electric Seats, Lane Departure Warning, Upgraded Touch Screen SD NZ NAV/CD/AUX/Bluetooth Streaming/Phone, Corris Grey Metallic with Cream Leather, Ambient Interior Lighting, Rotary Gear Selector, Push Button Start, 4WD Terrain response, Remote Locking, ABS/ESP, LED Lighting etc. Excellent economy, luxurious and ultra-modern!.

**christchurch european** | the european specialists

Phone 03 366 8328, Email [sales@christchurcheruropean.co.nz](mailto:sales@christchurcheruropean.co.nz)  
511 Blenheim Road, Sockburn, Christchurch 8042, New Zealand  
[www.christchurcheruropean.co.nz](http://www.christchurcheruropean.co.nz)

Niki Mills - 021 353 315  
Paul Mills - 022 536 0868  
Josh Giles - 021 087 54777

\* Finance calculation based on a 60 month term, 30% deposit and with an example annual fixed interest rate of 11.95%. Actual interest rate may be higher or lower. Includes an establishment fee of \$500.00 and a monthly maintenance fee of \$10.00. Full term total amount payable of \$41,956.21. Estimate only, not an offer of finance. Terms, conditions and lending criteria apply.