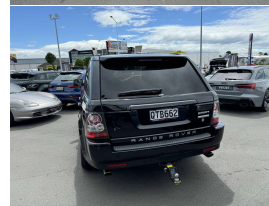


# 2009 Land Rover Range Rover Sport 5.0 V8



## VEHICLE INFORMATION

### Cash Price

Includes GST,  
Registration &  
Licensing

**\$29,995**

Finance this vehicle  
from only

**\$110.04**

per week\*

Total Amount Payable

**\$37,609.51**



Gain peace of mind  
with Mechanical  
Breakdown Insurance.  
Ask us how.

### Body

5 door, RV/SUV

### Odometer

164,000 km

### Engine

5000 cc, V8 Supercharged

### Fuel Type

Petrol

### Transmission

Automatic, 4WD

### Wheels

20.0000"

### VIN

SALLSJAE3AA220839

### Reg No.

QTB662

### Ext Colour

Santorini Black Metallic

### History

-

### Seats

5 seats

### Interior

Cream Leather

### Audio

-

### Stock ID

13069

2009 Range Rover Sport 5.0 V8 HSE Supercharged Facelift, 2010 MY, Flagship 510 HP V8 Supercharged model, Santorini Black Metallic with Cream Premium HSE Leather, Added Black-Pack 20" DTM Inferno wheels, Heated Front and Rear Seats, Roof rails fitted, Piano Dark Woodgrain inlays, Privacy Glass, Harmon Kardon Surround Sound, Touch Screen Bluetooth Phone/CD/AUX/Reverse Camera, Full Electrics, Remote Locking etc. Full spec Luxury with phenomenal performance!

Note- Full Service History noted.

**christchurch european** | the european specialists

Phone 03 366 8328, Email [sales@christchurcheuropean.co.nz](mailto:sales@christchurcheuropean.co.nz)  
511 Blenheim Road, Sockburn, Christchurch 8042, New Zealand  
[www.christchurcheuropean.co.nz](http://www.christchurcheuropean.co.nz)

Niki Mills - 021 353 315  
Paul Mills - 022 536 0868  
Josh Giles - 021 087 54777

\* Finance calculation based on a 60 month term, 30% deposit and with an example annual fixed interest rate of 10.95%. Actual interest rate may be higher or lower. Includes an establishment fee of \$500.00 and a monthly maintenance fee of \$10.00. Full term total amount payable of \$37,609.51. Estimate only, not an offer of finance. Terms, conditions and lending criteria apply.