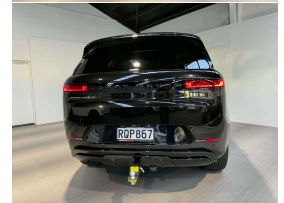
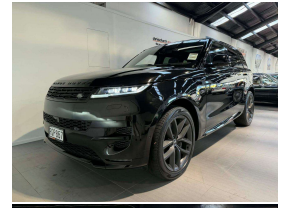
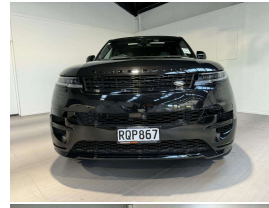


# 2024 Land Rover Range Rover Sport D300 HSE R-



## VEHICLE INFORMATION

### Cash Price

Includes GST,  
Registration &  
Licensing

**\$179,995**

Finance this vehicle  
from only

**\$650.92**

per week\*

Total Amount Payable

**\$223,237.48**



Gain peace of mind  
with Mechanical  
Breakdown Insurance.  
Ask us how.

### Body

SUV / 4x4

### Odometer

9,000 km

### Engine

3000 cc, Internal Combustion

### Fuel Type

Diesel

### Transmission

8 Speed Automatic, 4WD

### Wheels

22.0000"

### VIN

SAL1A2AW1RA159402

### Reg No.

RQP867

### Ext Colour

Santorini Black Metallic

### History

Ex-Overseas

### Seats

5 seats

### Interior

Black Leather HSE Seating

### Audio

-

### Stock ID

14280

2024 Range Rover Sport D300 HSE R-Dynamic Latest Model, Attractive Santorini Black Metallic with Premium Black HSE Leather, Just 6,000kms from new, Factory 22 inch HSE Sports Alloys in Grey, Heads-up Display, Heated and Cooling Seats, SVO Premium Bespoke Carpets, Dynamic Air Suspension, Privacy Glass, Heated Steering Wheel, Full Glass Panoramic Roof, Daytime LED Matrix Lighting, Electric Tailgate, Flush Electric Door Handles, Meridian Surround Sound Full Virtual Dash Cluster with 3D NZ Nav/Apple Car Play/Reverse Camera/Bluetooth, Radar Adaptive Cruise Control, Keyless entry, Privacy Glass, Full Electrics etc. This Range Rover is in as new condition!

Note- Black Plates not included.

**christchurch european** | the european specialists

Phone 03 366 8328, Email sales@christchurcheruropean.co.nz  
511 Blenheim Road, Sockburn, Christchurch 8042, New Zealand  
www.christchurcheruropean.co.nz

Niki Mills - 021 353 315  
Paul Mills - 022 536 0868  
Josh Giles - 021 087 54777

\* Finance calculation based on a 60 month term, 30% deposit and with an example annual fixed interest rate of 11.95%. Actual interest rate may be higher or lower. Includes an establishment fee of \$500.00 and a monthly maintenance fee of \$10.00. Full term total amount payable of \$223,237.48. Estimate only, not an offer of finance. Terms, conditions and lending criteria apply.