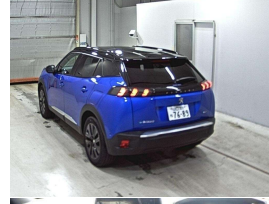
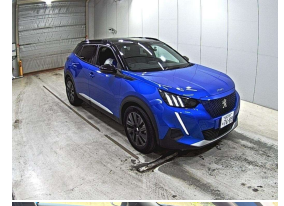


2024 Peugeot e-2008 GT Line Electric



VEHICLE INFORMATION

Cash Price

Includes GST,
Registration &
Licensing

\$42,995

Finance this vehicle
from only

\$159.19

per week*

Total Amount Payable

\$54,288.27



Gain peace of mind
with Mechanical
Breakdown Insurance.
Ask us how.

Body

5 door, RV/SUV

Odometer

4,000 km

Engine

0 cc, Electric

Fuel Type

Electricity

Transmission

Automatic

Wheels

18.0000"

VIN

VR3UKZKXZPJ644287

Reg No.

-

Ext Colour

Blue Metallic

History

Ex-Overseas

Seats

5 seats

Interior

Black Half Leather

Audio

-

Stock ID

14697

2024 Peugeot e-2008 GT Line Full-Electric SUV, Peugeot's Fully Electric Zero-Emissions Luxury mid-size SUV with a 5 kWh Battery for up to 320 kms range on a full charge! Only 4,000kms from new! Factory 18 inch Polished Sports Alloys, Distinctive LED Running Lights, Added Glass Sunroof, Radar Cruise Control, Privacy Glass, Part Leather/Velour GT Line Sports Seats, Lane Assist, Heated Seats, Full Digital Cockpit with Bluetooth Phone and Music/Apple Car Play/360 Cameras, Multiple Airbags, ABS, Full Electrics etc. A very popular and practical size EV designed for the future!

Factory 8 Year/100,000kms Worldwide Peugeot Battery Warranty cover applies.

christchurch european | the european specialists

Phone 03 366 8328, Email sales@christchurcheruropean.co.nz
511 Blenheim Road, Sockburn, Christchurch 8042, New Zealand
www.christchurcheruropean.co.nz

Niki Mills - 021 353 315
Paul Mills - 022 536 0868
Josh Giles - 021 087 54777

* Finance calculation based on a 60 month term, 30% deposit and with an example annual fixed interest rate of 11.95%. Actual interest rate may be higher or lower. Includes an establishment fee of \$500.00 and a monthly maintenance fee of \$10.00. Full term total amount payable of \$54,288.27. Estimate only, not an offer of finance. Terms, conditions and lending criteria apply.